

Schottky Dual Diode

SBL3030PT

30V / 30A

DATASHEET

from

www.web-bcs.com

OEM – General Semiconductor

Source: General Semiconductor Databook 1998

SBL3030PT AND SBL3040PT

SCHOTTKY RECTIFIER

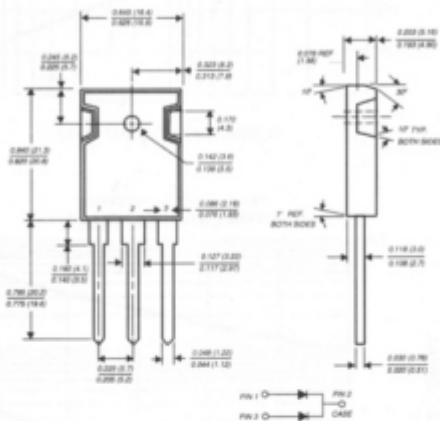
Reverse Voltage - 30 and 40 Volts Forward Current - 30.0 Amperes

FEATURES

- ◆ Plastic package has Underwriters Laboratory Flammability Classifications 94V-0
- ◆ Metal to silicon rectifier, majority carrier conduction
- ◆ Low power loss, high efficiency
- ◆ High current capability, low forward voltage drop
- ◆ High surge capability
- ◆ For use in low voltage, high frequency inverters, free wheeling, and polarity protection applications
- ◆ Dual rectifier construction, positive center-tap
- ◆ Guardring for overvoltage protection
- ◆ High temperature soldering guaranteed: 250°C/10 seconds, 0.17" (4.3mm)



TO-247AD



Dimensions in inches and (millimeters)

MECHANICAL DATA

Case: JEDEC TO-247AD molded plastic body

Terminals: Lead solderable per MIL-STD-750, Method 2026

Polarity: As marked

Mounting Torque: 10 in. - lbs. max.

Mounting Position: Any

Weight: 0.2 ounce, 5.6 grams

MAXIMUM RATINGS AND ELECTRICAL CHARACTERISTICS

Ratings at 25°C ambient temperature unless otherwise specified.

	SYMBOLS	SBL3030PT	SBL3040PT	UNITS
Maximum repetitive peak reverse voltage	V _{RRM}	30	40	Volts
Maximum RMS voltage	V _{RMS}	21	28	Volts
Maximum DC blocking voltage	V _{DC}	30	40	Volts
Maximum average forward rectified current at T _C =100°C	I _(AV)	30.0		Amps
Peak forward surge current, 8.3ms single half sine-wave superimposed on rated load (JEDEC Method)	I _{FSM}	275.0		Amps
Maximum instantaneous forward voltage per leg at 15A (NOTE 1)	V _F	0.55		Volts
Maximum instantaneous reverse current at T _C =25°C rated DC blocking voltage per leg (NOTE 1) T _C =100°C	I _R	75.0		mA
Typical thermal resistance (NOTE 2)	R _{θJC}	1.5		°C/W
Operating junction and storage temperature range	T _J , T _{STG}	-40 to +125		°C

NOTES:

- (1) Pulse test: 300µs pulse width, 1% duty cycle
- (2) Thermal resistance from junction to case per leg

RATINGS AND CHARACTERISTIC CURVES SBL3030PT AND SBL3040PT

