

# Germanium Diode

## **CV442**

25V / 30mA

# DATASHEET

OEM – Ediswan Mazda

Source: Ediswan Mazda Databook 1957/58

**GERMANIUM CRYSTAL RECTIFIERS**

POINT CONTACT TYPES RATINGS (Continuous, at 20°C)—Test Limits

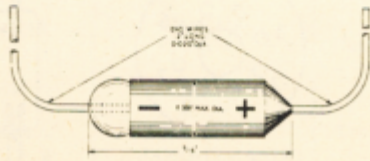
		CV 425 (CG1-E)	CV 442	CG4-E	CG 6-E	CG 10-E	CG 12-E
*Peak inverse voltage	volts	65	25	80	70	100	25
Turnover voltage	volts	80	30	100	85	120	30
Max. input current	mA	30	30	30	30	30	30
Max. resistance at +1 volt	ohms	250	333	333	500	500	333
Min. resistance at -10 volts	ohms	—	1 × 10 <sup>4</sup>	—	2 × 10 <sup>4</sup>	2 × 10 <sup>4</sup>	5 × 10 <sup>4</sup>
Min. resistance at -50 volts	ohms	5 × 10 <sup>4</sup>	—	5 × 10 <sup>4</sup>	—	2 × 10 <sup>4</sup>	—
†Rectification efficiency (min.) at 70 Mc/s.		—	75%	—	—	—	75%

\* Corresponds to 2mA inverse current.

† As compared with silicon crystal. With 4 volts r.m.s. input and 1,000 ohms load.

JUNCTION TYPES RATINGS AT AMBIENT TEMPERATURES up to 55°C.

	GJ.3-M	GJ.5-M
Peak inverse voltage (volts)	200	300
D.C. output current (mA)	100	100
Continuous reverse working voltage (volts)	65	100



Dimensioned outline of germanium crystal rectifiers.

Dimensioned outline of germanium crystal rectifiers.

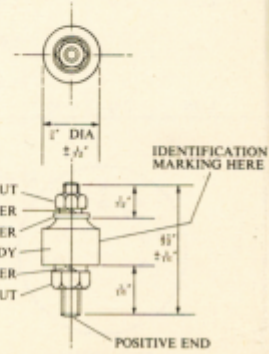


Fig. 2 Dimensioned outline of Germanium Junction Rectifiers.

Fig. 2 Dimensioned outline of Germanium Junction Rectifiers.